

ACCORD

COMMERCIAL TEAM



910 N. Main-Tea, SD
(near corner of Brian & Main)
\$9.75/square foot

- Retail/Office Building for Lease
- Building size is 9,000 square feet
- Lot size is 43,560 square feet
- Built in 2007
- On site paved parking
- Zoned Central Business
- MLS # 21000944

Very nice 9,000 square foot new construction building. Near intersection of Main & Brian in growing Tea, SD. Space can be finished to tenant specifications. Located across from Tea City Park, St. Nicholas Catholic Church and next door to Milky Way. Building and monument signage is available. Great space at a great price. Other tenants include Parkside Dental and a pet grooming business.



www.TheAccordTeam.com



605 359.8430 office
271.8354 fax

101 W. 69th Street, Ste 101
Sioux Falls, SD 57108

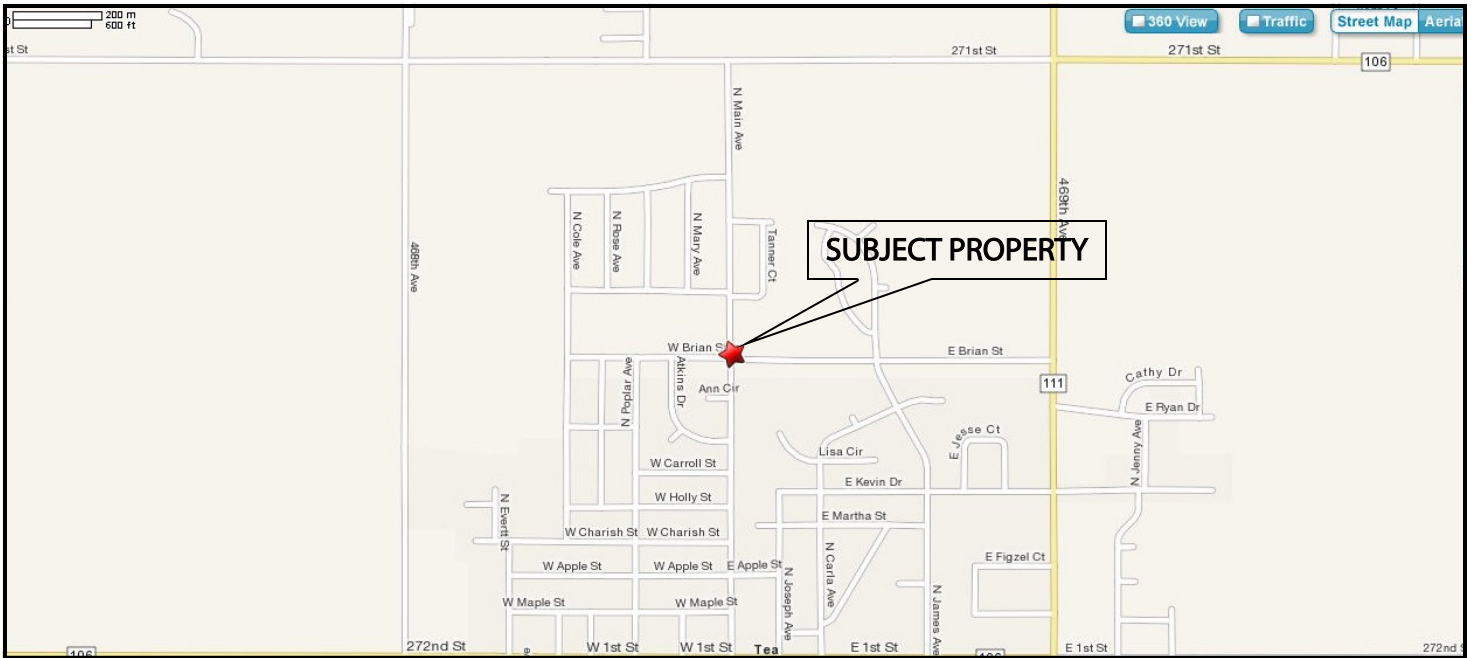


MIKE HAUCK, JD
COMMERCIAL BROKER
mhauck@theaccordteam.com
605.359.8430

Information herein deemed reliable, but not guaranteed.



910 N. Main
Tea, SD
\$9.75/square foot



** Pictures are for marketing purposes only and not representative of items which remain with the sale and transfer of property. A member of the ownership group is a licensed real estate broker.**



605 359.8430 office
271.8354 fax

101 W. 69th Street, Ste 101
Sioux Falls, SD 57108