



**FOR  
LEASE**



**427 N MINNESOTA AVE SUITE C, SIOUX FALLS**

**OFFICE  
SPACE**

**\$11.00 PSF**



## PROPERTY SUMMARY

---

- 1,737 Square Feet
- Located across the street from Minnehaha County Administration Building and Courthouse
- Over 22,000 vehicle per day traffic count
- Front and rear parking
- Est. NNN \$4.68 PSF
- Monument Signage on Minnesota Avenue
- Co-tenants are Nichols & Rabuck, PC and Dunham Associates, Inc

## EXCLUSIVELY LISTED BY

---



**BENJAMIN AAKER**

605.759.8044

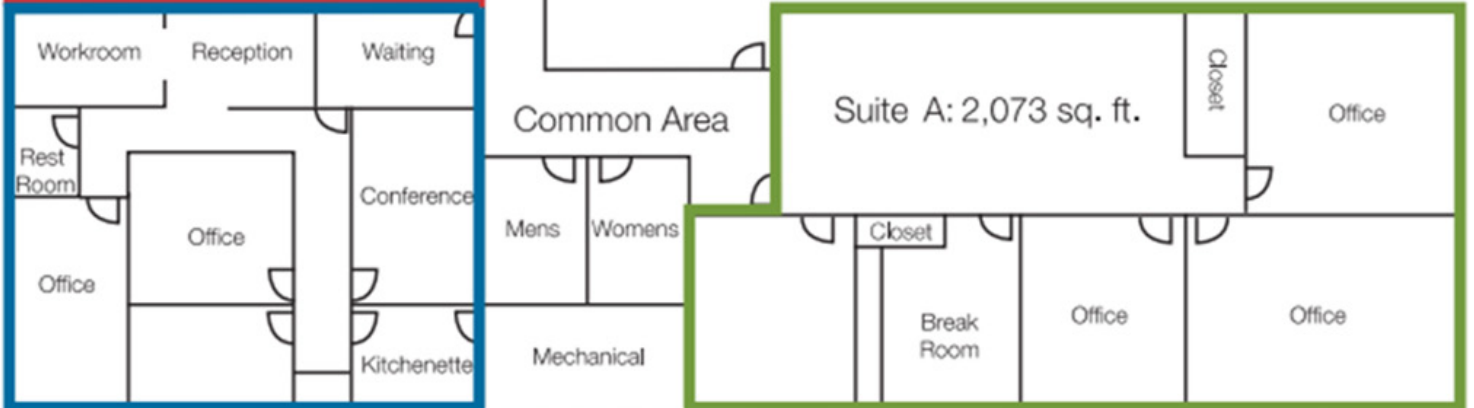
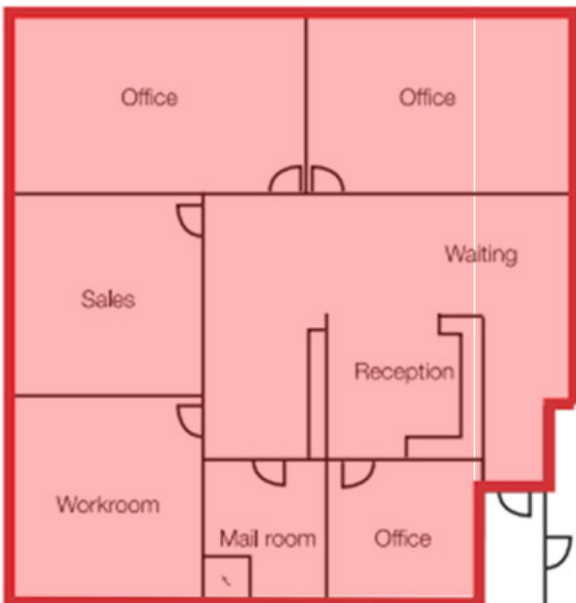
[Benjamin@redwoodeq.com](mailto:Benjamin@redwoodeq.com)

[www.theaccordteam.com](http://www.theaccordteam.com)

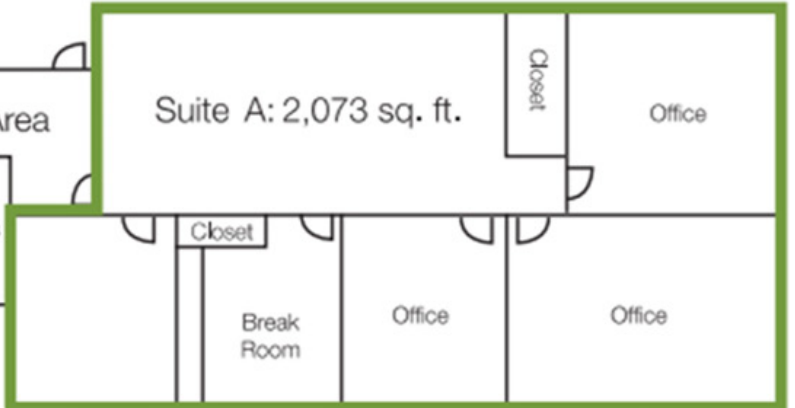
\*Information on this memorandum is deemed reliable, but not guaranteed.

**FLOOR PLAN**

Suite C: 1,737 sq. ft.



Suite B: 1,168 sq. ft.



Suite A: 2,073 sq. ft.

**PROPERTY IMAGES**





**| FOR LEASE**  
**427 N MINNESOTA AVE**  
**SUITE C, SIOUX FALLS**

## PROPERTY IMAGES



**AERIAL MAP**

